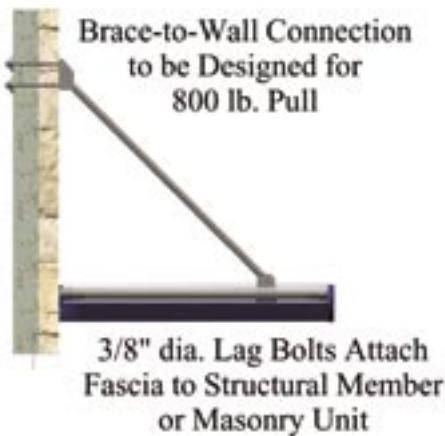
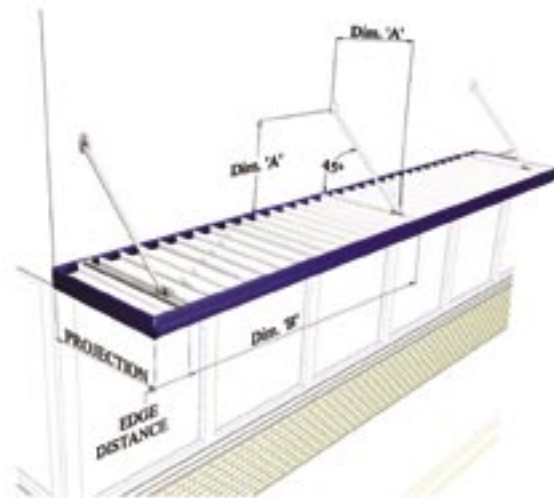
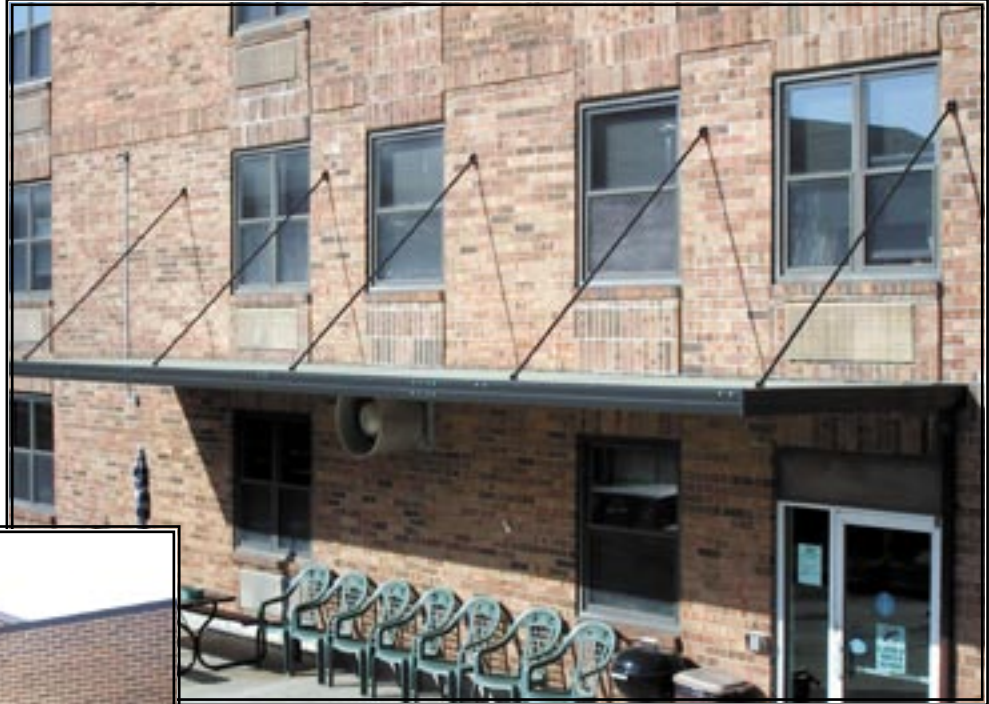


Imperial Marquee

overhead braces



B = Distance between supports at load in lbs per sq ft

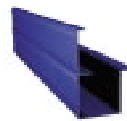
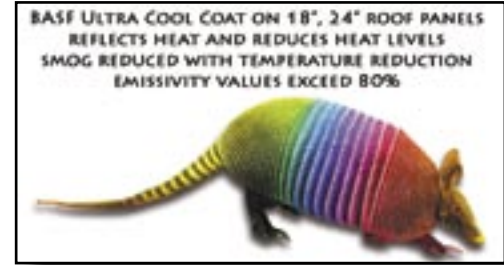
A	Projection	B @ 22.6#	B @ 32.6#	B @ 42.5#
3'	4'	10' 0"	9' 2"	7' 0"
4'	5'	10' 0"	7' 10"	6' 0"
5'	6'	9' 10"	6' 10"	5' 2"
6'	7'	8' 8"	6' 0"	4' 7"
7'	8'	7' 9"	5' 4"	4' 1"
8'	9'	7' 0"	4' 10"	3' 8"
9'	10'	5' 8"	4' 6"	3' 4"

Imperial Marquee

overhead braces

Cover includes:

- **Powder coated, overhead steel braces**
Up to 10' spacing on braces - see chart
Optional support beam to increase brace spacing
- **Structural roof panels**
Aluminum roof panel options
24" W panel
8" flush panel
10" V panel
Galvalume® steel 24" W panel
- **Extruded aluminum gutter**
6-1/2" tall, with a 3-1/3" gutter



Options

- **Support beam**
- **Fabric valance**

TO ORDER,
1) Draw up measurements,
2) Choose Roof panel and colors
3) Options:
Fabric valance with lettering,

Gutter & Brace Colors

Anti-Graffiti, Super Durable Polyester TGIC Powder Coat



Roof Options & Colors

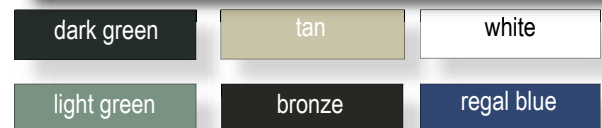
24" wide "W" roof panel

Aluminum, stucco embossed
Ultra Cool Finish meets Energy Star specs



24" wide "W" roof panel

Galvalume® 24 gauge
Ultra Cool Finish meets Energy Star specs



10" wide "V" panel

Aluminum, stucco embossed finish



8" wide structural flat roof panel - aluminum

