



Adding a porch or patio cover? Points to consider:

1. Roof panel choices

Americana offers several roof panels for our covers. Each model lists style included.

- V shaped panels are the most economical with a corrugated ceiling.
- Flat shape panel for a smooth under ceiling
- Insulated panel has a polystyrene core and stucco embossed aluminum skin.

2. Post placement.

- Sierra model:

4 in. tall beam mounts to pre-punched roof panels, creating a 6 in. overhang.

- All other models:

Posts mount under beam. Place beam 6 in. to 24 in. from front upon installation.

3. Wall mounting area

Unit must slope down from the attached wall.

If using 8' tall post on a 10' projection cover: Mount unit at 101 inches.

$96 \text{ in. (8')} + 5 \text{ in. (1/2 in. per foot of projection)} = 101 \text{ in. mounting height}$

Make sure wall is free of obstructions at this dimension.

Post may be shortened on job site, changing mounting height if needed.

4. Posts can be surface mounted or bury 2' in concrete. Order longer post if placing in concrete.

5. Post type will be indicated in the kit information with options listed.

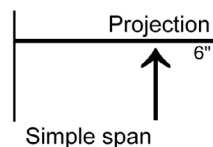
6. When choosing model keep weather and environmental conditions in mind for your area.

Reference each model for wind speed and live snow load capabilities.

Engineering Data on Simple Span

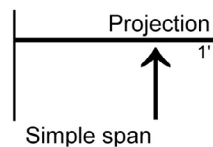
Attached Units = Distance from wall mount to beam/post location

Freestand Units = Distance between beams/posts

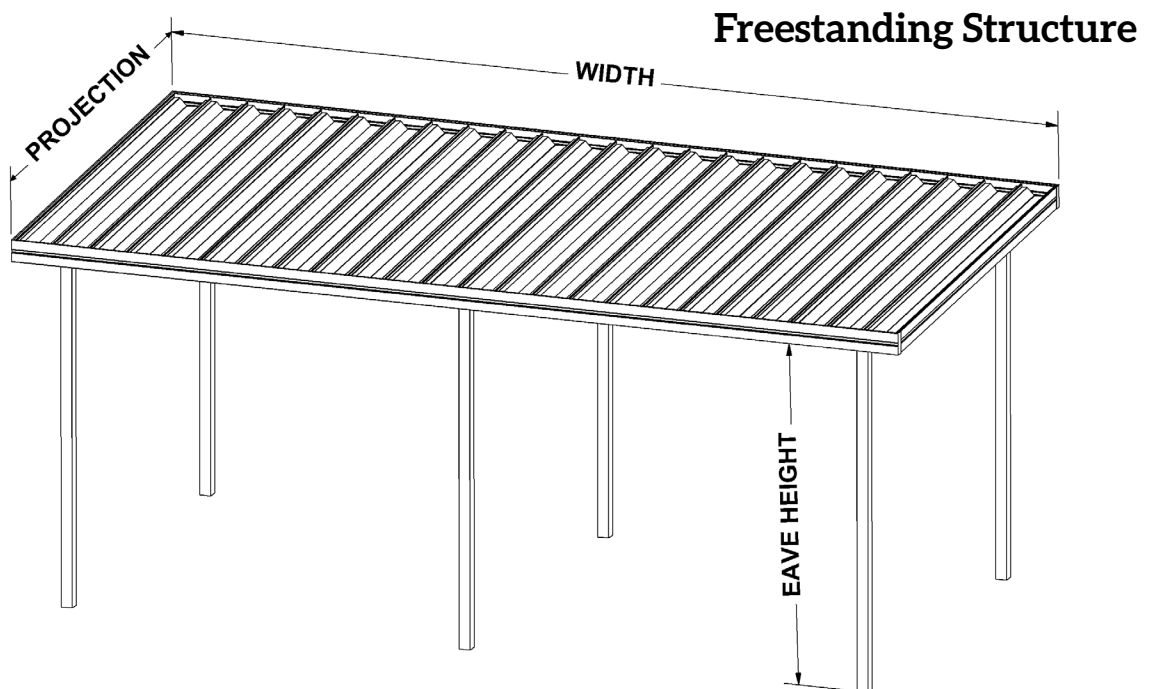
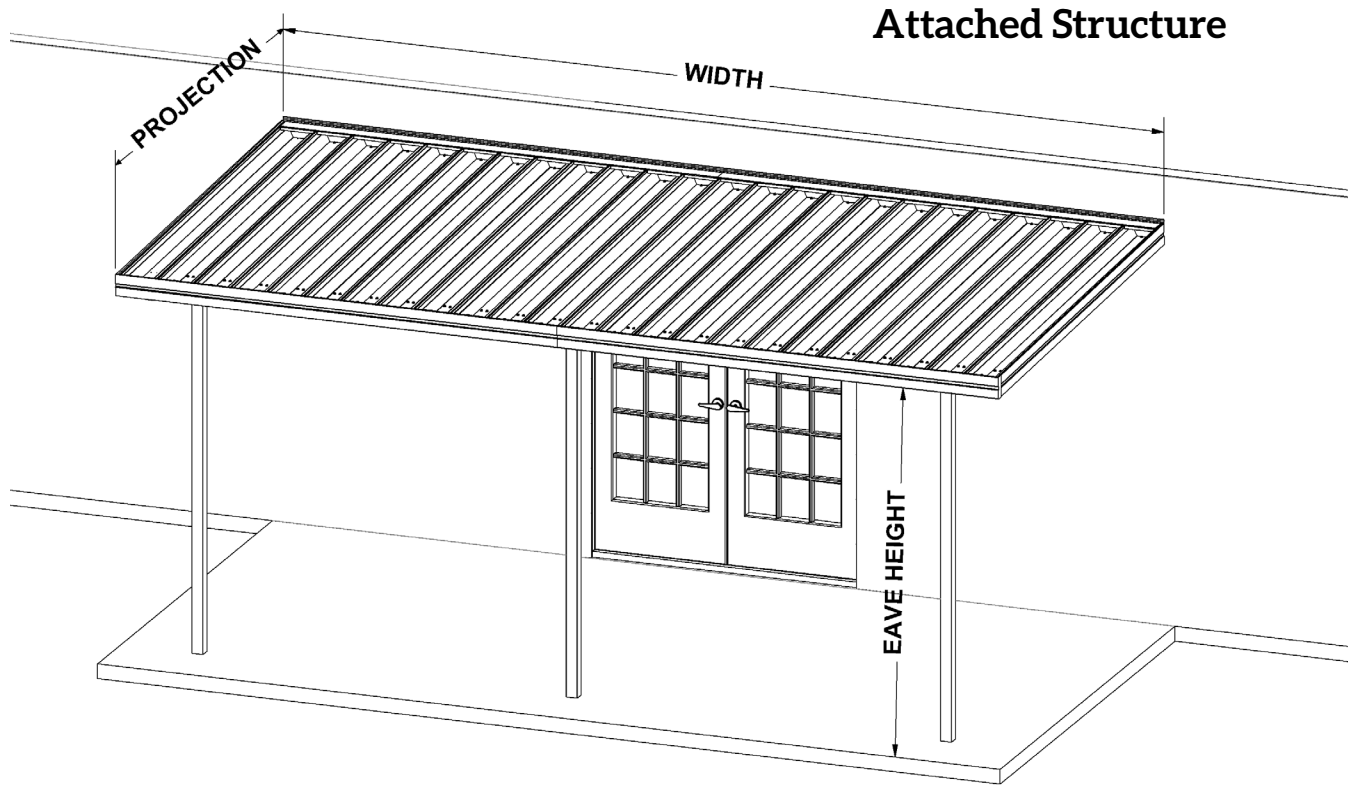


Examples

Sierra style has a standard 6" set back of beam.
 $8' 6'' \text{ projection} = 8' \text{ beam location} = 8' \text{ simple span}$
 Light & Moderate Load
 54# per sq foot & 110 mph winds



Teton style has adjustable beam placement
 $11' \text{ projection with } 1' \text{ beam setback} = 10' \text{ simple span}$
 Light & Moderate Load
 24# per sq foot & 90 mph winds





Features:

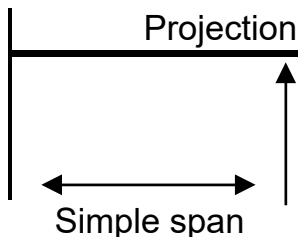
- Engineered for all different climates and environments.
- Components are pre-punched, making installation fast and easy
- Choice of 3 in. square post or decor column, extruded aluminum
- Roll-formed aluminum gutter and side trim
- Roll-formed aluminum panels 10 in. width
- Two piece wall channel to adjust roof slope
- Scuppers are sent to drain water from front gutter

Engineering Data for Open Structures

Sierra Southern Climates					
	7'	8'	10'	12'	14'
Roof Panel Thickness	.019	.019	.019	.019	.025
Live Snow Load	75 lbs	50 lbs	35 lbs	25 lbs	20 lbs
Wind Speed	110 mph	110 mph	90 mph	80 mph	Not Rated

Sierra Midwestern Climates					
	7'	8'	10'	12'	14'
Roof Panel Thickness	.019	.019	.025	.025	.032
Live Snow Load	75 lbs	50 lbs	45 lbs	30 lbs	30 lbs
Wind Speed	110 mph	110 mph	110 mph	85 mph	85 mph

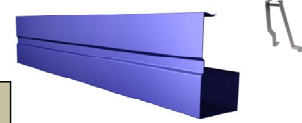
Sierra Northern Climates					
	7'	8'	10'	12'	14'
Roof Panel Thickness	.025	.025	.032	.032	.040
Live Snow Load	90 lbs	65 lbs	55 lbs	40 lbs	35 lbs
Wind Speed	120 mph	120 mph	120 mph	100 mph	90 mph



We can engineer what you need. Call us with your code requirements. Loads can be increased by moving beam placement or adding additional beams.

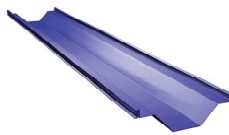
Components

6" tall, with a 3" x 3" gutter, Rollformed aluminum, stucco embossed
Snap onto a clip installed in roof panel



WHITE	BLUE	CLAY	BROWN	TAN
IVORY	BLACK	TERRA COTTA	DARK GREEN	GRAY

10" V Panel - 3 Load Options
Aluminum, roll formed
Slide or snap together
Pre-punched for installation



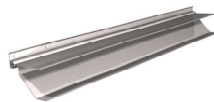
WHITE	IVORY
-------	-------

Post Options: Aluminum in 8' or 10' length
1) Decor 9" wide column
2) Post 3" square with brackets

WHITE
IVORY
CLAY
BROWN
BLACK



Wall Hanger
Extruded aluminum 2 piece system allows
virtually any roof pitch and protects against
damage from ground heaving.



Pre-punched for ease of installation

WHITE	IVORY
-------	-------

___ Projection from wall to front of cover
in 1" increments. Locate beam location.
Standard unit is sent with roof panels
punched for beam 6" back from front

___ Width along wall in 10" increments

___ Choose Roof Panel Thickness (Gauge)

Wall Mounting: Check wall for obstructions

Posts will mount to:

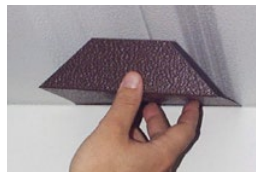
- ___ Concrete slab ___ Wood Deck
- ___ Buried in ground...use 10' post/column

Support Beam
Rollformed "C" 4" tall x 2" wide
Galvalume metal
Standard beam/post location 6" from front

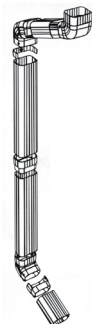


Optional Components

Bird Plugs: use between beam and roof panel
Choice of : Aluminum or Styrofoam



Downspout Kit
2x3" tube, all elbows, fittings, straps




Features:

- Designed for dent resistance and durability, the perfect cover for areas with a lot of hail
- 10 in. wide roof panel of Galvalume® steel combines barrier protection of aluminum and zinc against cuts and scratches. Guaranteed against rusting for 20.5 years, far longer than galvanized or painted steel
- Extruded aluminum gutter and side trim
- Adjustable post placement with 3 in. square beam, set back 6 - 24 in. from front, max 12' from house
- Extruded 3" square aluminum posts with brackets
- Two piece wall channel to adjust roof slope

Engineering Data for Open Structures

24 gauge Galvalume Steel

10" Structural "V" Roof Panel							
# PER SQ FT							
Simple Span (ft)							
	4'	6'	7'	8'	9'	10'	
Live Load	110	75	60	45	35	25	

We can engineer what you need. Call us with your code requirements. Loads can be increased by moving beam placement or adding additional beams.


Features:

- Extruded aluminum gutter and side trim
- Roll-formed aluminum panels 10 in. wide
- Extruded aluminum posts with mounting bracket:
3 inch square in 8' or 10' lengths
- 3 inch square support beam
- Two piece wall channel to adjust roof slope
- Scupper sent to drain water from gutter

Engineering Data for Open Structures

Ozark Patio Cover				
	6'	8'	10'	12'
Beam Set Backs	6"	12"	12"	12"
Roof Panel Thickness	.025	.025	.025	.025
Live Snow Load	90 lbs	65 lbs	45 lbs	30 lbs
Wind Speed	120 mph	120 mph	110 mph	85 mph

We can engineer what you need. Call us with your code requirements. Loads can be increased by moving beam placement or adding additional beams.

Components

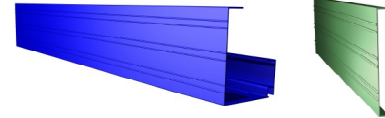
Extruded front gutter and side trim, aluminum

Alpine Color Choices

WHITE	BRONZE
IVORY	CLAY

Ozark Color Choices

WHITE	DARK GREEN	
IVORY	TAN	BRONZE



Alpine Roof Panels

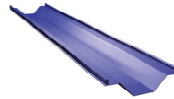
10" V Panel
Galvalume Steel, roll formed
Slide or snap together
Pre-punched for installation

WHITE

Ozark Roof Panels

10" V Panel - .025 gauge
Aluminum, roll formed
Slide or snap together
Pre-punched for installation

WHITE



Alpine Color Choices

WHITE
IVORY
BRONZE
CLAY

3" Square Post with Brackets

Aluminium Post in 8' or 10' length



Ozark Color Choices

WHITE
IVORY
BRONZE
TAN

Wall Hanger

Extruded aluminum 2 piece system allows virtually any roof pitch and protects against damage from ground heaving.

Pre-punched for ease of installation

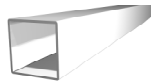


WHITE	IVORY*	<small>*Only Available on Ozark Model</small>
-------	--------	---

Support Beam

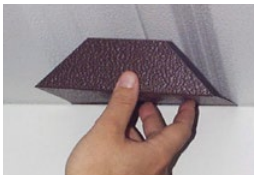
Extruded, 3" square Aluminum

WHITE

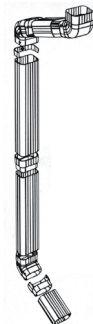


Optional Components

Bird Plugs: use between beam and roof panel
Choice of : Aluminum or Styrofoam



Downspout Kit
2x3" tube, all elbows, fittings, straps



___ Projection from wall to front of cover in 1" increments.

___ Width along wall in 10" increments

Wall Mounting: Check wall for obstructions

Posts will mount to:

___ Concrete slab ___ Wood Deck

___ Buried in ground...use 10' post/column



Features:

- Roll-formed, 8 in. wide, flush panel eliminates areas for birds to nest with smooth design
- Adjustable post placement, set back 6 - 24 in. from front, max 12' from house
- Most components are pre-punched, making installation fast and easy
- Extruded aluminum post, 3 in. square
- Extruded aluminum gutter and side trim
- Two piece wall channel to adjust roof slope
- Scuppers are sent to drain water from front gutter
Optional downspout kit available

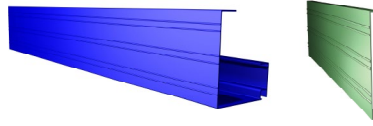
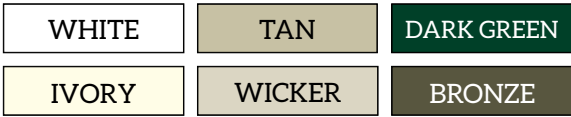
Engineering Data for Open Structures

Teton Patio Covers							
	6'	7'	8'	9'	10'	11'	12'
Roof Panel Thickness	.032	.032	.032	.032	.032	.032	.032
Live Snow Load	60 lbs	60 lbs	55 lbs	44 lbs	37 lbs	33 lbs	27 lbs
Wind Speed	140 mph	110 mph	90 mph	120 mph	110 mph	110 mph	85 mph

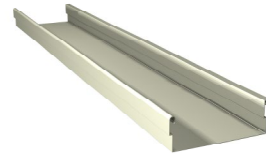
We can engineer what you need. Call us with your code requirements.
Loads can be increased by moving beam placement or adding additional beams.

Components

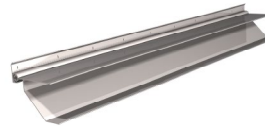
Extruded front gutter and side trim, aluminum



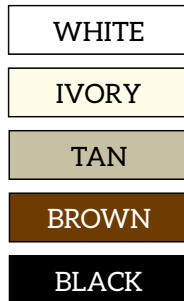
Rollformed, 8" width aluminum roof panels slide or snap together and are pre punched for ease of installation.



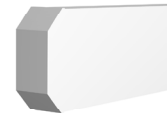
Extruded aluminum 2 piece wall hanger allows virtually any roof pitch and protects against damage from ground heaving. Pre punched for ease of installation.



Post 3" square with brackets extruded aluminum 8' or 10'



Rollformed 3"x 8" Support Beam



___ Projection from wall to front of cover in 1" increments.

___ Width along wall in 8" increments

Wall Mounting: Check wall for obstructions

Posts will mount to:

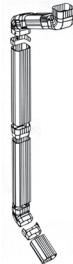
___ Concrete slab ___ Wood Deck

___ Buried in ground...use 10' post/column

Optional Components

Downspout Kit
vinyl 10' tube, all elbows,
fittings straps and tilt up.

White
Ivory
Brown





Features:

- Roll-formed, 8 in. wide, flush panel eliminates areas for birds to nest with a smooth design
- Extruded aluminum gutter and side fascia overlaid with wood grain embossed trim kit
- Two piece, extruded aluminum wall channel to adjust roof slope
- Extruded aluminum post, 3 in. square with wood look side plates
- Adjustable post placement, set beam 6- 24 in. from front, maximum 12' from house
- Most components are pre-punched, making installation fast and easy
- Scuppers are sent to drain water from front gutter
Optional downspout kit available

Engineering Data for Open Structures

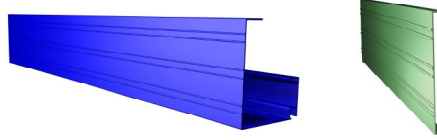
Vegas Patio Covers				
	6'	8'	10'	12'
Roof Panel Thickness	.032	.032	.032	.032
Live Snow Load	60 lbs	53 lbs	37 lbs	27 lbs
Wind Speed	140 mph	110 mph	90 mph	85 mph

We can engineer what you need. Call us with your code requirements.
Loads can be increased by moving beam placement or adding additional beams.

Components

Extruded front gutter and side trim, aluminum

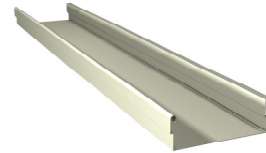
WHITE



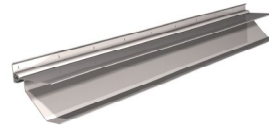
Wood grain embossed aluminum trim attaches to the gutter and side trim.

Rollformed, 8" width aluminum roof panels slide or snap together and are prepunched for ease of installation.

WHITE



Extruded aluminum 2 piece wall hanger allows virtually any roof pitch and protects against damage from ground heaving. Pre punched for ease of installation.



Post 3" square with brackets extruded aluminum 8' or 10'

WHITE

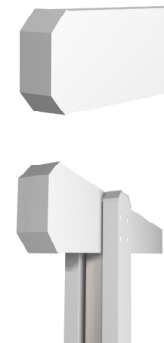


Rollformed 3"x 8" Support Beam

WHITE

Side post plates, wood look aluminum

8' 8" set
10' 8" set



Optional Components

Downspout Kit
vinyl 10' tube, all elbows, fittings straps and tilt up.

White
Ivory
Brown



___ Projection from wall to front of cover
in 1" increments.
Note: Front rafter extensions add 12"

___ Width along wall in 8" increments
Note: Side trim add 4"

Wall Mounting: Check wall for obstructions

Posts will mount to:

___ Concrete slab ___ Wood Deck
___ Buried in ground...use 10' post/column



Features:

- Yukon patio covers lower the outside temperature by up to 10 degrees with R12 rated insulation.
- Engineered for all climates, the Yukon provides superior protection from winter storms
- Built to last a lifetime with minimal care
- Snap together 3 in. insulated panels provide our strongest support
- 2 piece extruded aluminum wall channel to adjust roof slope
- Adjustable post placement, set beam 6- 24in. from front, maximum 12' from house.
- Quiet during a rain and reduces temperatures up to 15% on hot days.
- Eliminates gap between gutter, beam and roof panel

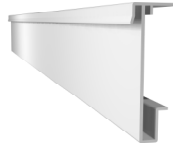
Engineering Data for Open Structures

3" Thick Yukon Patio Cover - Clear Span					
	8'	10'	12'	14'	16'
Aluminum Skin Thickness	.024	.024	.024	.024	.024
Live Snow Load	50 lbs	40 lbs	30 lbs	20 lbs	20 lbs
Wind Speed	140 mph	140 mph	120 mph	120 mph	110 mph

We can engineer what you need. Call us with your code requirements.
Loads can be increased by moving beam placement or adding additional beams.

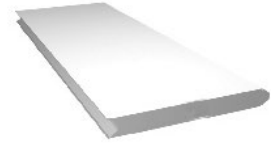
Components

3" tall trim
Extruded aluminum
Screw on to roof panel



WHITE

3" Insulated Panel
Aluminum Snap Lock
Superior Strength



Post 3" square with brackets
extruded aluminum 8' or 10'



WHITE

IVORY

CLAY

BROWN

BLACK

Support Beam
Extruded, 3" square Aluminum



WHITE

Beam allow posts to be set back up to
24" from front of cover.

Optional Components

Panel with Fan Beam

This allows you to hang a ceiling light or fan. When installing, run electrical wire through the beam and secure light or fan to beam. Beam is installed into the panel at the factory. Place this panel where desired.



Fan, Bracket, & Wiring
Sold Separatly

___ Projection from wall to front of cover
in 1" increments.

Note: Locate beam location

___ Width along wall in 24" increments

___ Add Panel with Fan Beam

Wall Mounting: Check wall for obstructions

Posts will mount to:

___ Concrete slab ___ Wood Deck

___ Buried in ground...use 10' post/column



Single Bay Features:

- 4 in. Roll-formed, galvalume support beams
- 10 in. roll-formed aluminum roof panels
- Extruded aluminum 3 in. square posts provide 8' clearance, embedded in concrete or order optional surface mounting brackets.

Gutter Color Options:



Sierra Freestand Covers



Width: Support beams & posts along these sides
Projection: Roof panels run this direction

Roof Panel Color Options:



- Optional Component: Surface mount bottom bracket



Post 3" square with brackets extruded aluminum 8' or 10'





Double Bay Features:

- Extruded aluminum beams 8" tall will free span for less posts
- 10 in. roll-formed aluminum roof panels
- Extruded aluminum 3 in. square posts provide 8' clearance, embedded in concrete or order optional surface mounting brackets.

Gutter Color Options:



Sierra Freestand Covers



Width: Support beams & posts along these sides
Projection: Roof panels run this direction

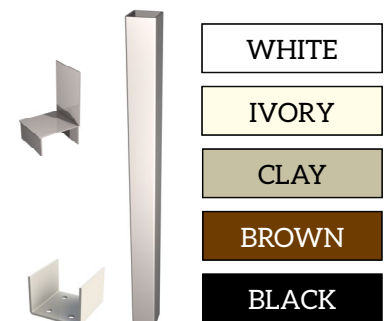
Roof Panel Color Options:



- Optional Component:
Surface mount bottom bracket



Post 3" square with brackets
extruded aluminum 8' or 10'



Warranty

What the Warranty Covers:

Americana Outdoors Inc warrants its products that have been installed in accordance with the installation guidelines, under normal usage conditions, and with proper maintenance as follows: Ten (10) year warranty against peeling, cracking, blistering, or crazing of the surface finish of aluminum components. One (1) year warranty against defects in materials and workmanship. Sunbrella® tight weave fabric, & Sheerweave fabric - 10 year limited warranty. Textilene® open weave fabric, & Soltis 86 - 5 year limited warranty.

Period of Coverage:

The warranty period begins on the date of original shipment.

What Americana Will Do To Correct Problems:

If defects or damage of the kind mentioned above should occur within the warranty period, Americana will replace the defective parts only; FOB its plant at Salem, Illinois, upon receiving the written and documented claim of purchaser.

What the Warranty Excludes:

Because of normal aging and weathering of materials, it may not be possible to perfectly match the colors of original parts and replacement parts. Americana will not provide or pay for the installation of such replacement parts. Americana shall not be responsible for weather related failures, damages due to faulty installation, misuse or abuse of the product, or for consequential damages, including personal injuries or property damages. There are no warranties, express or implied, which extend beyond the description on the face hereof.

How Do You Get Service:

If you believe that you have a claim under this warranty, submit a copy of your original receipt or other reasonable evidence of the date of purchase, the identity of the product, and photos and a description of the allegedly defective product to the address below. Please also include your name, address, and phone number so that a customer service representative can respond to your submission. Ultimate determination of the existence and extent of any claimed defect under this warranty shall be made by Americana in its sole discretion.

Submit Claims To:

Americana Outdoors, Inc Warranty Claim, P.O. Box 1290, Salem, IL, 62881



PO Box 1290,
2 Industrial Drive, Salem IL 62881
1-800-851-0865
Sales@Americana.com



**2020 RESIDENTIAL PATIO COVERS
& CARPORTS CATALOG**