



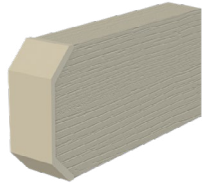
Pergolas - Single Header Attached & Freestanding



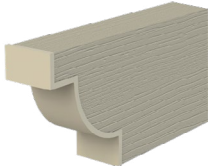
Single Header Pergola Features:

- Roll-formed Aluminum with an embossed wood grain finish provides the look of wood without the hassle. Will not rot, warp or need repainting.
- Single header and posts have adjustable placement, allowing you to locate where needed. Some restrictions will apply in heavy load bearing areas.
- Cut to length headers and rafters that have routed ends with caps factory installed. 3 options available.
- Lattice tubes at 1-1/2" square with standard 3" gap providing 50% shade. Gap can be customized to provide more or less shade.
- Standard posts are an extruded aluminum 3" square. Attached units come with mounting brackets.
- Freestanding units require posts to be embedded in concrete or use optional heavy duty mounting brackets. Optional decorative post surrounds are available. See order chart for details.

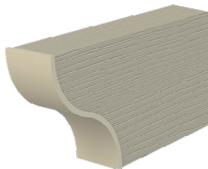




Standard End



Deluxe End



Scallop End



Double Header Pergola Features:

- Roll-formed Aluminum with an embossed wood grain finish provides the look of wood without the hassle. Will not rot, warp or need repainting.
- Double header and posts have adjustable placement, allowing you to locate where needed. Some restrictions will apply in heavy load bearing areas.
- Cut to length headers and rafters that have routed ends with caps factory installed. 3 options available.
- Lattice tubes at 1-1/2" square with standard 3" gap providing 50% shade. Gap can be customized to provide more or less shade.
- Standard posts are an extruded aluminum 3" square. Attached units come with mounting brackets.
- Freestanding units require posts to be embedded in concrete or use optional heavy duty mounting brackets. Optional decorative post surrounds are available. See order chart for details.



Window Arbors



Standard Unit



Custom Units

Window Arbor Features:

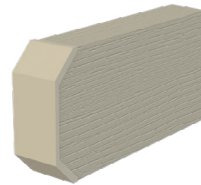
Woodgrain embossed aluminum components are sent cut to length, ready to install.

Components have ends routed and end caps installed.

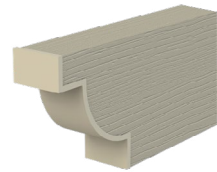
Unit has a two 2" x 6.5" rafters and 1-1/2" lattice.

Aluminum wall braces mount under rafters.
Standard sizes are
42" projection with 78" and 90" widths.

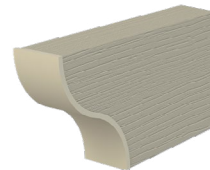
Adjustable brace placement:
78" width allows maximum 62" between braces.
90" width allows maximum 74" between braces.



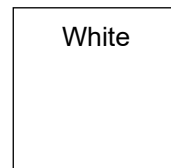
Standard End



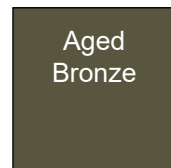
Deluxe End



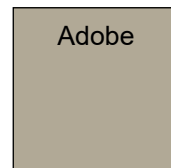
Scallop End



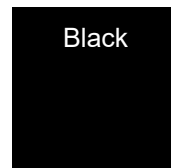
White



Aged
Bronze

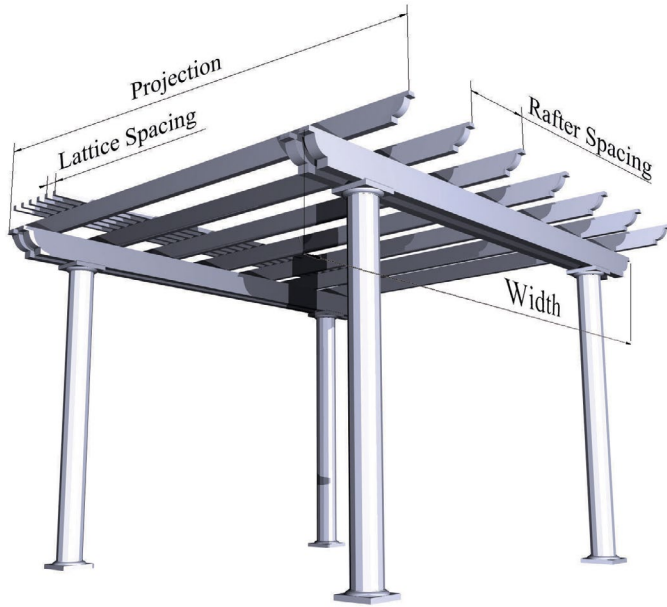


Adobe

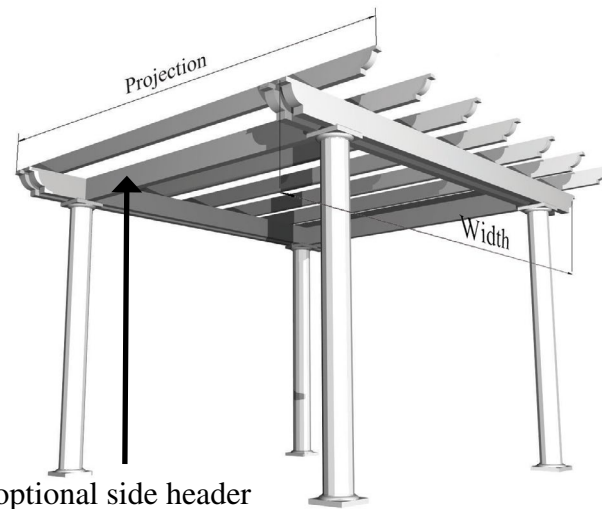


Black

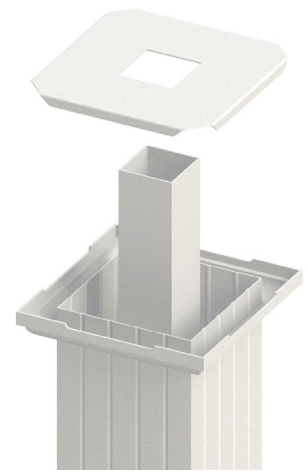
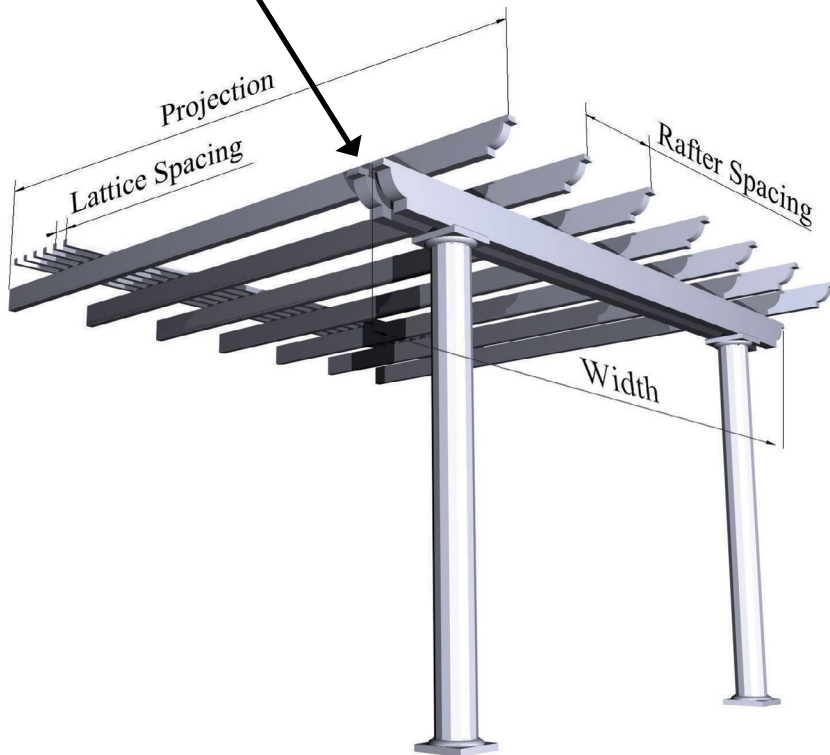
Colors may not print accurate, please call 800-851-0865 to order color samples.



Drawings shown with double header beam



Shown with optional side header



Standard unit comes with 3" post. Optional decor posts available. Square fluted aluminum option shown above.

Customize your Pergola Conceptual Drawings Available

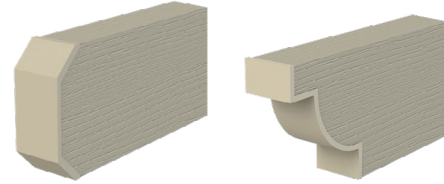
BEAM OPTIONS

- single header beam
 double header beams

CHOICE OF:

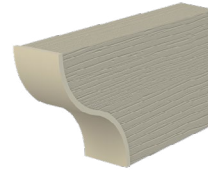
- attached
 freestanding

 bury posts in concrete or
 optional HD mounting brackets



Standard End

Deluxe End



Scallop End

DIMENSIONS:

_____ projection (2" x 6-1/2" rafter dimension)
_____ width (3" x 8" header beam dimension)

LATTICE, 1-1/2" SQUARE

create more or less shade with the lattice tubes

- standard 3" gap 1-1/2" gap No lattice
 gap _____

ENGINEERING:

Weight load requirements: 10# 20# 30#
Standard to 90mph winds - Higher wind loads available.

CHOICE OF POSTS

- 3" square post
 3" sq post & 2"x6" woodlook side plates

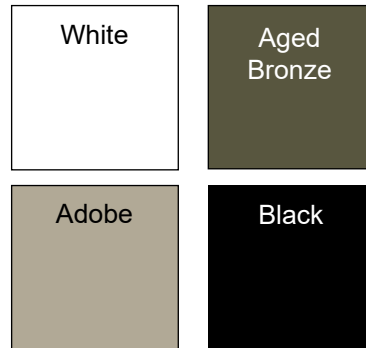
Decorative columns, aluminum options

- Have an internal 3" square post
 - Easy snap together assembly
Caps, bases & columns
- Aluminum, fluted round,
6", 8" or 10" white, adobe, or special order wicker
- Aluminum, fluted square,
6", 8" or 10" white, adobe, or special order wicker
- Aluminum, smooth square,
6", 8" or 10" white, adobe, or special order wicker

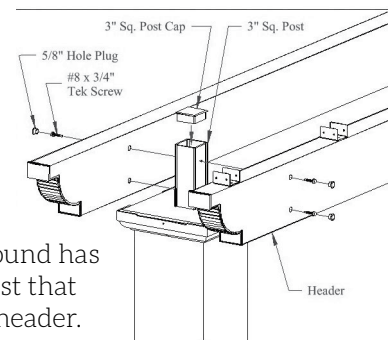
Decorative columns, fiberglass options

- Have an internal 3" square post
 - Must be field painted
 - Require lifting over 3" post on installation
- Fiberglass, smooth round,
6", 8", 10", 12"

Decorative post surround has
an internal 3" sq post that
fastens to a double header.



Colors may not print accurate, please
call 800-851-0865 to order color samples.



Warranty

What the Warranty Covers:

Americana Outdoors (Americana) warrants its products that have been installed in accordance with the installation guidelines, under normal usage conditions, and with proper maintenance as follows:

Ten (10) year warranty against peeling, cracking, blistering, or crazing of the surface finish of aluminum components.

One (1) year warranty against defects in materials and workmanship.

Period of Coverage:

The warranty period begins on the date of original shipment.

What Americana Will Do To Correct Problems:

If defects or damage of the kind mentioned above should occur within the warranty period, Americana will replace the defective parts only; FOB its plant at Salem, Illinois, upon receiving the written and documented claim of purchaser.

What the Warranty Excludes:

Because of normal aging and weathering of materials, it may not be possible to perfectly match the colors of original parts and replacement parts. Americana will not provide or pay for the installation of such replacement parts. Americana shall not be responsible for weather related failures, damages due to faulty installation, misuse or abuse of the product, or for consequential damages, including personal injuries or property damages. There are no warranties, express or implied, which extend beyond the description on the face hereof.

How Do You Get Service:

If you believe that you have a claim under this warranty, submit a copy of your original receipt or other reasonable evidence of the date of purchase, the identity of the product, and photos and a description of the allegedly defective product to the address below. Please also include your name, address, and phone number so that a customer service representative can respond to your submission. Ultimate determination of the existence and extent of any claimed defect under this warranty shall be made by Americana in its sole discretion.

Submit Claims To:

Americana Outdoors Inc, Warranty Claim, P.O. Box 1290, Salem, IL, 62881



PO Box 1290, Salem IL 62881
1-800-851-0865, Fax: 1-618-548-2890
Sales@Americana.com
www.Americana.com



2020 PERGOLA CATALOG