



AMERICANA

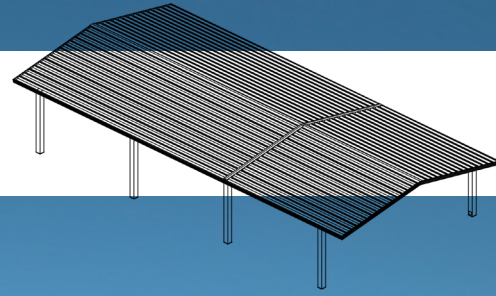
OUTDOORS

Elements for Life *Outside*®



W W W . A M E R I C A N A . c o m

Gable Roof Shelters



Meramec (DSA) Series

For spaces in need of straightforward shelter, the Meramec is the perfect solution. A classic gable roof design allows the Meramec to be installed in any outdoor environment to provide protection from the elements without detracting from the natural beauty of the space.

Sizes: Ranging from 20-41' wide and 20-54' long.

Roof Pitch: Standard 3/12.

Structure: Four sided pre-fabricated, powder coated steel frame.

Frame: Tubular Steel.

Standard Roof System:

24" Aluminum "W" Panel with Extruded Aluminum Gutters.

Optional Roof System:

3" thick Insulated Aluminum Faced Panel with Edge Trim.

Tongue & Groove Wood with Shingles.

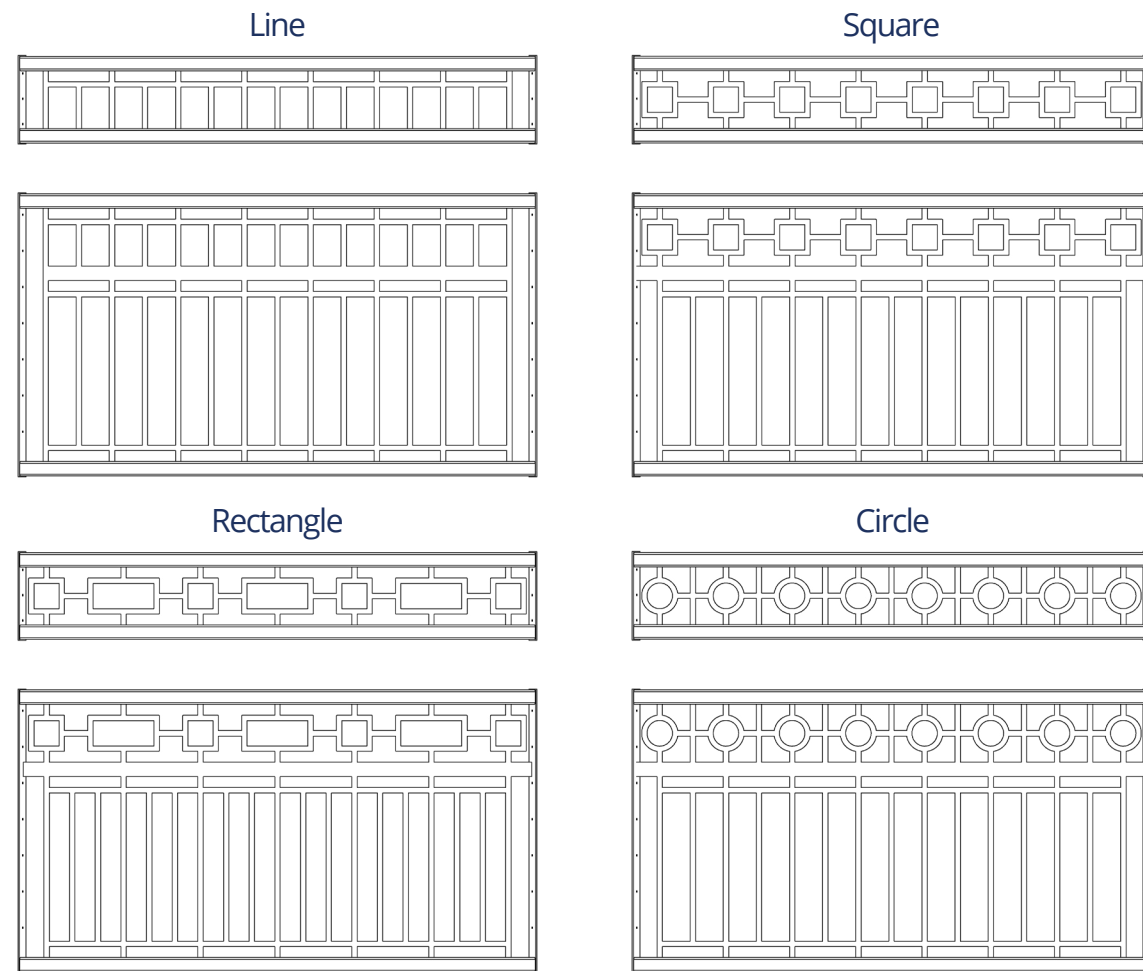
Add-On Accessories: Steel railing





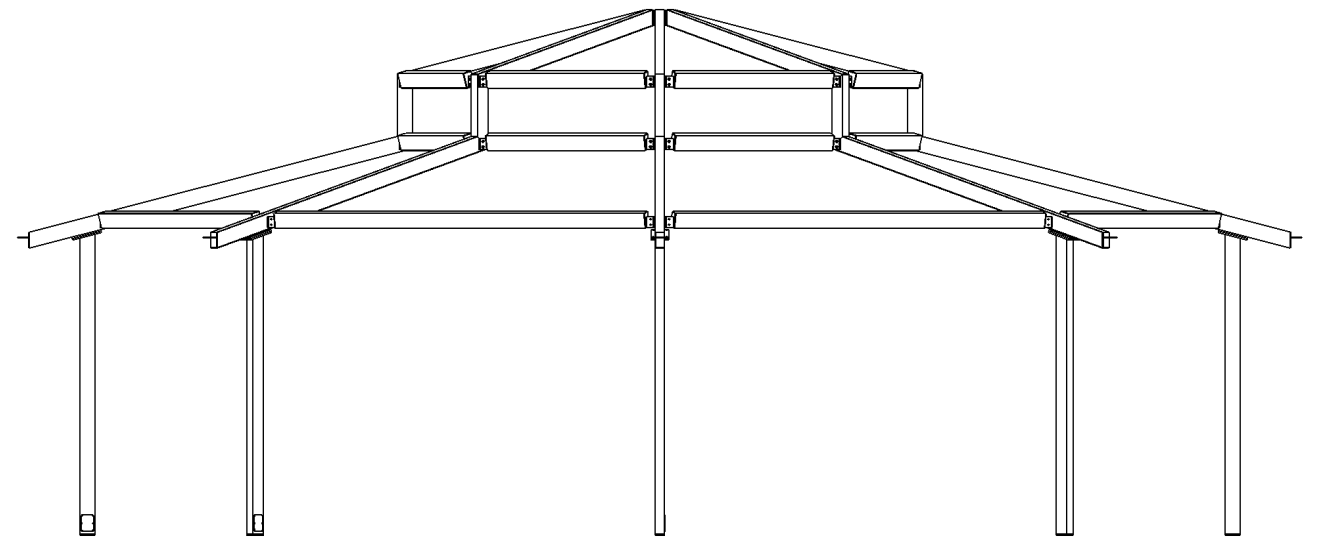
Railing Options

Railings are a great way to add a unique touch to your structure and can be incorporated into most designs. There are several standard designs available, inspired by common architectural styles, and customized designs are available to suit your project's needs. Top Railings are 12" tall, Bottom Railings are 42" tall, made from 3/16" thick steel.

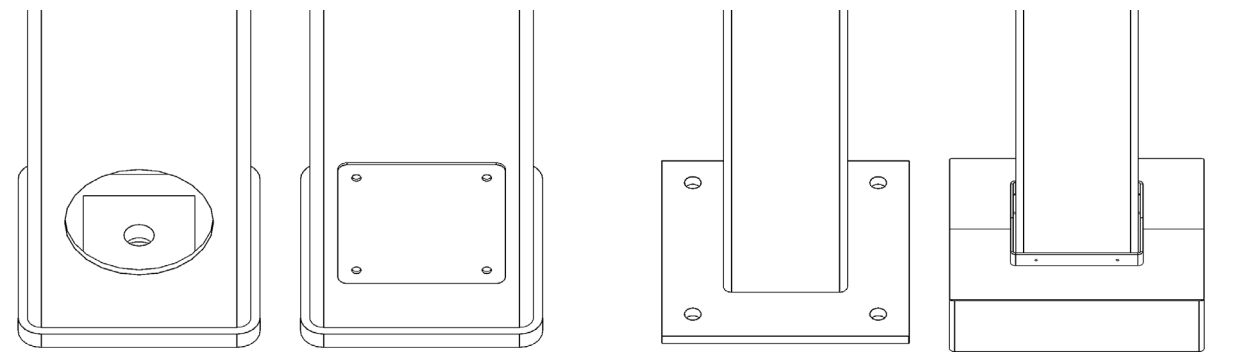


Frame & Post Style

Americana Shelters feature American-made steel tubular frames, pre-drilled for easy bolt-together assembly, and detailed instructions that reduce installation costs. Fasteners are zinc-plated, galvanized, or stainless steel to prevent rust and stains.

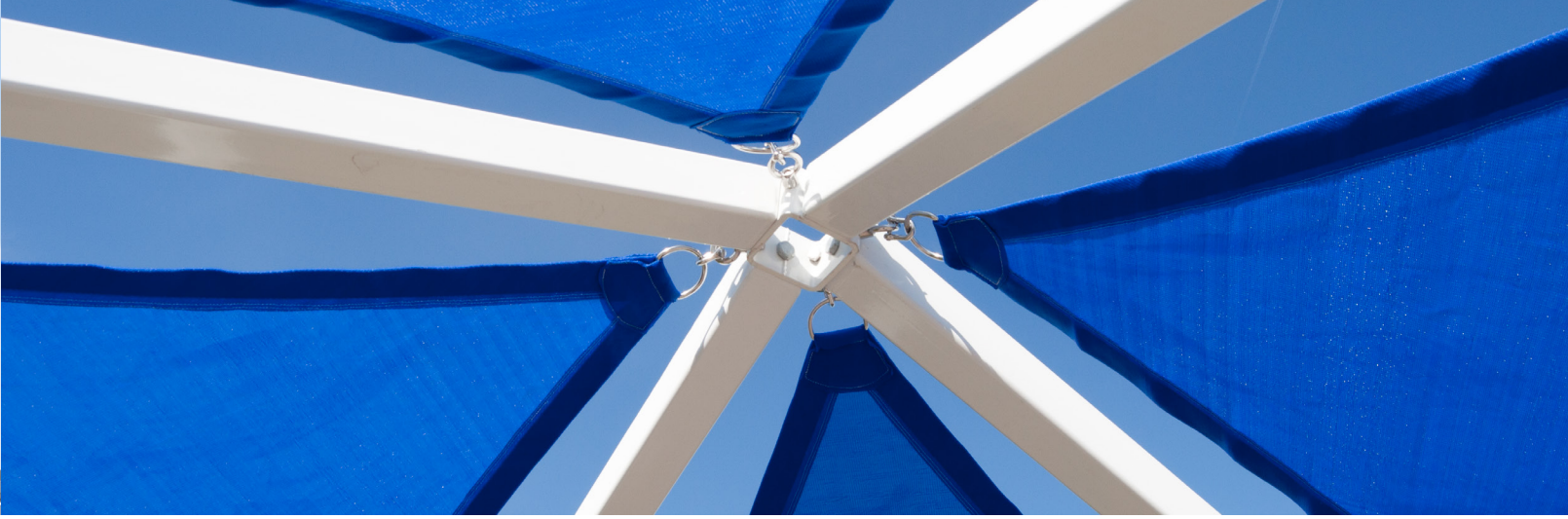


Standard Post Base Plate Connections



Internal Anchor Bolt with Cover Plate

External Anchor Bolts with Optional Cover



Roof Panel Colors & Options

We take great pride in producing a majority of our roof panel options in-house, which gives us complete control over the quality and production schedule. By doing so, we are able to provide our customers with top-notch products while also passing on cost savings

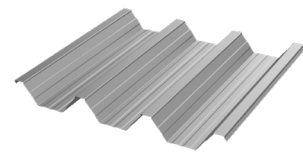
24" Aluminum Structural "W" Panel

Features:

Structural roof panel designed to limit the amount rafters & purlins per structure.

Best overall value when comparing cost & strength.

Gutters are included for water erosion management.



Coverage Width - 24"
 Minimum Slope - 1/2:12
 Thickness - .038" & .024" (560 Anodized Only)
 Finish - Stucco Embossed
 Coatings - DuraCoat XT40 Ceranamel
 Rib Spacing - 8" on center
 Rib Height - 2-1/2"
 Compatible with all model shelters except for Pergola

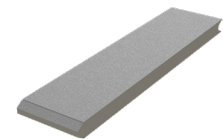


3" Thick Insulated Aluminum Panel White stucco finish with foam core

Features:

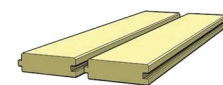
Insulated panels for noise and temperature control.

Flush fit for a cleaner, sleeker appearance.



Compatible with all model shelters except for Cherokee, Pergola, Walkways & Entry Covers

Tongue and Groove Wood



1) Southern Yellow Pine
 2) Western Cedar

Utilized as sub roofing for shelters using the 18" standing seam panels or shingles.

Frame & Fabric Color Options

Our Americana Industrial Coatings division enables us to powdercoat all of our products in-house, setting us apart from our competitors. This grants us complete authority over pricing, quality, and production times, allowing us to transfer these benefits to our customers.

Super Durable Frame Color Options



Super Durable & Anti Graffiti Frame Color Options





PO Box 1290, Salem IL 62881
1-800-851-0865, Fax: 1-618-548-2890
Sales@Americana.com
www.Americana.com

