



AMERICANA

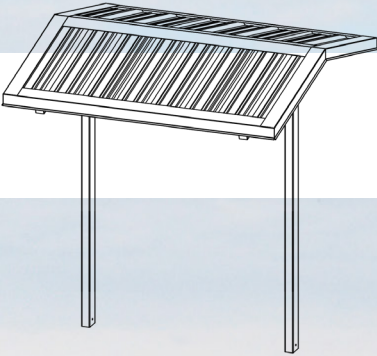
OUTDOORS

Elements for Life *Outside*®



W W W . A M E R I C A N A . c o m

Gable Roof Shelters





Cherokee Series

Americana Outdoors' Cherokee provides a mix of functionality and shelter, with its double posts acting as a mount for a display board, bench, or table, while also supporting an aluminum roof.

Sizes: Ranging from 8-12' wide and 8-12' long.

Roof Pitch: Standard 3/12.

Structure: Pre-fabricated, powder coated Steel Frame.

Frame: Tubular Steel, or Extruded Aluminum.

Standard Roof System:

24" Aluminum "W" Panel with Extruded Aluminum Gutters.

Optional Roof System:

36" Galvalume "R" panel with Aluminum Edge Trim, or Optional Gutter.

18" Galvalume Standing Seam Panel with Extruded Aluminum Gutters, or Edge Trim with T&G Wood.

8" Aluminum Roll Formed Flat Panel with Extruded Aluminum Gutters.

Add-On Accessories: Bulletin boards, bench, table & bench, double bench.





Options & Accessories

Whether it's enhancing functionality with thoughtfully crafted benches, fostering a communal atmosphere with inviting tables, or keeping everyone informed with convenient bulletin boards, the Cherokee Shelter adapts effortlessly to your vision.



Sliding Door Bulletin Board

- Frameless door design for large viewing area
- Showcase lock design
- Smooth rolling on nylon rollers
- Finger pulls



Hinged Door Bulletin Board

- Acrylic Safety Glass
- Lockable Doors
- Continuous Hinges
- Vented Case for moisture reduction
- Weatherized Rear Panel
- Thick Rubber Door Seal
- Satin Anodized finish clear/ bronze anodized
- Tackable burlap weave vinyl surface



Aluminum Benches

- 2x10" Extruded Anodized Aluminum Planks
- Optional Powder Coating



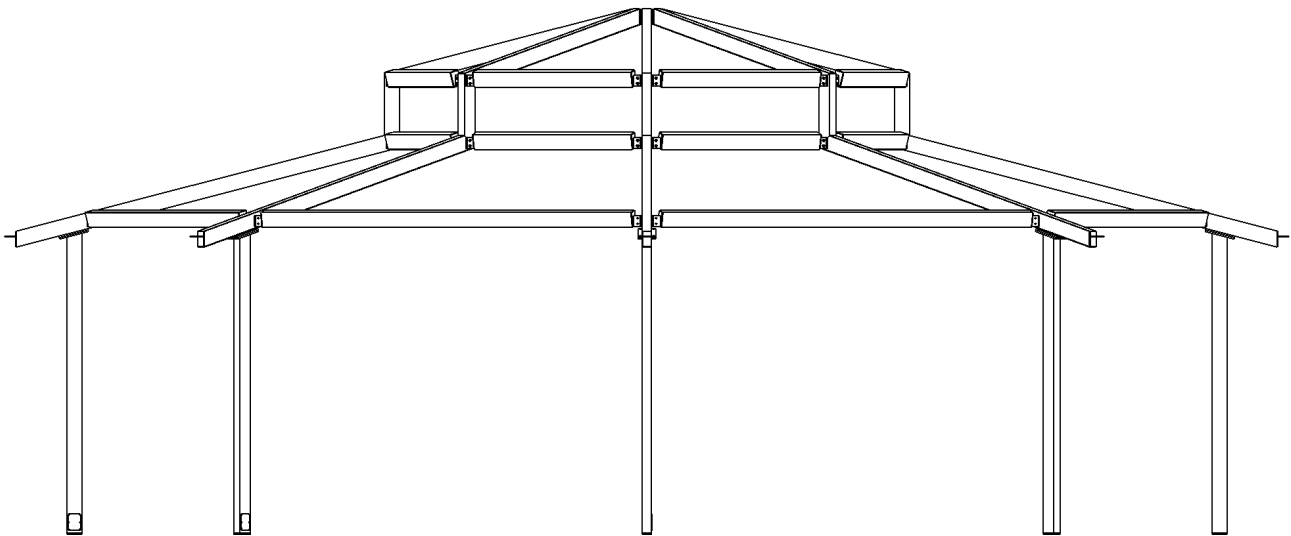
Aluminum Tables

- 2x10" Extruded Anodized Aluminum Planks
- Optional Powder Coating

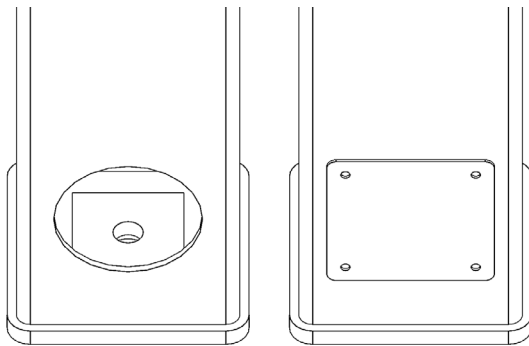


Frame & Post Style

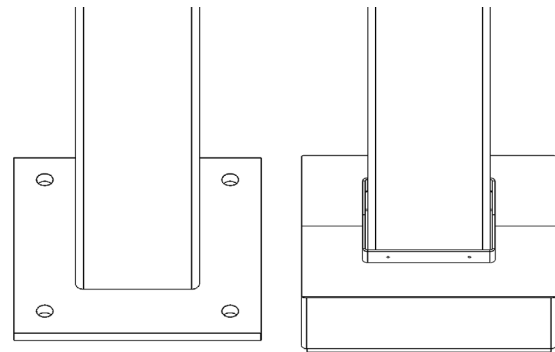
Americana Shelters feature American-made steel tubular frames, pre-drilled for easy bolt-together assembly, and detailed instructions that reduce installation costs. Fasteners are zinc-plated, galvanized, or stainless steel to prevent rust and stains.



Standard Post Base Plate Connections



Internal Anchor Bolt with Cover Plate



External Anchor Bolts with Optional Cover



Roof Panel Colors & Options

We take great pride in producing a majority of our roof panel options in-house, which gives us complete control over the quality and production schedule. By doing so, we are able to provide our customers with top-notch products while also passing on cost savings

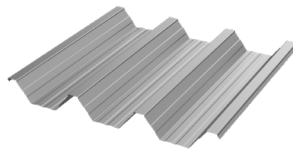
24" Aluminum Structural "W" Panel

Features:

Structural roof panel designed to limit the amount rafters & purlins per structure.

Best overall value when comparing cost & strength.

Gutters are included for water erosion management.



Coverage Width - 24"
 Minimum Slope - 1/2:12
 Thickness - .038" & .024" (560 Anodized Only)
 Finish - Stucco Embossed
 Coatings - DuraCoat XT40 Ceranamel
 Rib Spacing - 8" on center
 Rib Height - 2-1/2"

Compatible with all model shelters except for Pergola



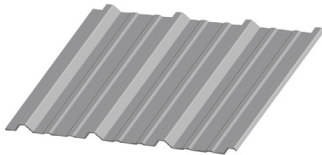
36" Galvalume® 26 Gauge "R" Panel

Features:

Flush fit for a cleaner, sleeker appearance.

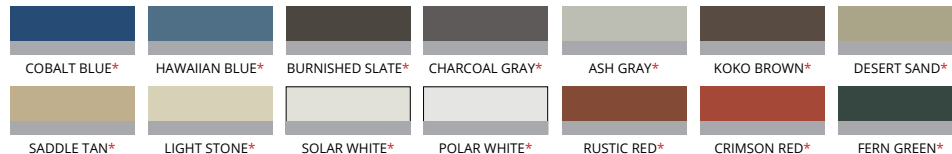
Designed to deter bird roosting.

Edge trim is included for a simple & flawless finish.



Coverage Width - 36"
 Minimum Slope - 1/2:12
 Gauge - 26
 Finish - Smooth
 Coatings - Siliconized Polyester
 Rib Spacing - 12" on center
 Rib Height - 1-1/4"

Compatible with all model shelters except for Meramec, Colonial & Pergola



Colors containing asterisks have a wash coat bottom side

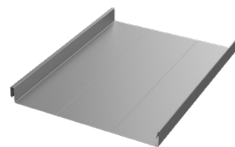
18" Galvalume® 24 Gauge Standing Seam Panel

Features:

Flush fit for a cleaner, sleeker appearance.

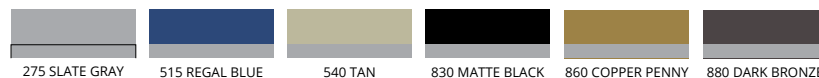
Designed to deter bird roosting.

Gutters are included for water erosion management. Edge trim is standard with tongue and groove wood substructures applications.



Coverage Width - 18"
 Minimum Slope - 1/2:12
 Gauge - 24
 Finish - Smooth
 Coatings - Siliconized Polyester
 Rib Spacing - N/A
 Rib Height - 1-3/4"

Compatible with all model shelters except for Meramec, Colonial, & Pergola



Each color has a wash coat on the underside, paired with an inked date stamp for manufacturer warranty verification.



Roof Panel Colors & Options

We take great pride in producing a majority of our roof panel options in-house, which gives us complete control over the quality and production schedule. By doing so, we are able to provide our customers with top-notch products while also passing on cost savings

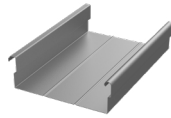
8" Aluminum Structural Flat Panel

Features:

Flush fit for a cleaner, sleeker appearance.

—
Designed to deter bird roosting.

—
Gutters are included for water erosion management.



Coverage Width - 8"
Minimum Slope - 1/2:12
Thickness - .024", .032", & .040"
Finish - Smooth Matte Finish
Coatings - DuraCoat XT40 Ceramel
Rib Spacing - N/A
Rib Height - 2-5/8"
Compatible with all model shelters except for Meramec & Pergola



275 SLATE GRAY



510 BLACK



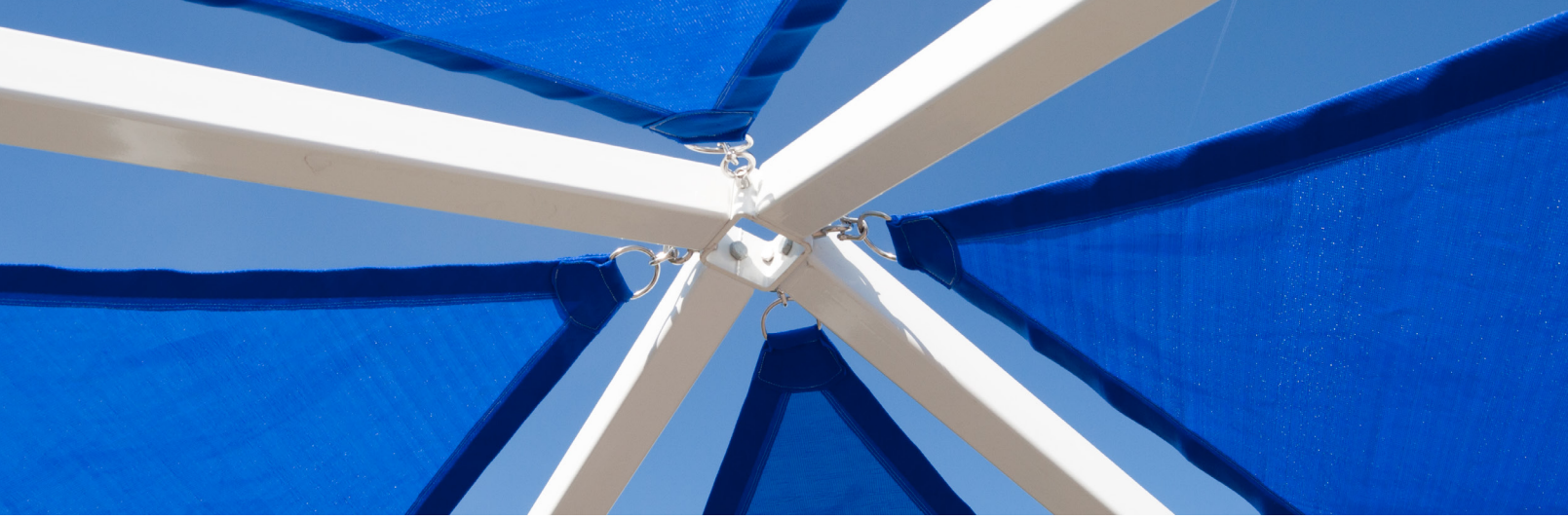
520 BRONZE



550 BONE WHITE



560 ANODIZED



Frame & Fabric Color Options

Our Americana Industrial Coatings division enables us to powdercoat all of our products in-house, setting us apart from our competitors. This grants us complete authority over pricing, quality, and production times, allowing us to transfer these benefits to our customers.

Super Durable Frame Color Options

| | | | | | |
|---|---|---|---|--|---|
|  |  |  |  |  |  |
| 205 ORANGE RAL 2004 | 215 YELLOW | 220 RAVEN (TEXTURED) | 235 NAVY BLUE RAL 5003 | 240 ROYAL BLUE RAL 5005 | 242 SKY BLUE RAL 5015 |
|  |  |  |  |  |  |
| 245 CAST BRONZE RAL 8019 | 265 HUNTER GREEN RAL 6005 | 270 QUARTZ GRAY RAL 7039 | 275 SLATE GRAY | 285 RED RAL 3001 | 290 SILVER |
|  |  |  |  | | |
| 815 ASH GRAY | 820 CHARCOAL GRAY | 840 COLONIAL RED | 865 LIGHT GREEN | | |

Super Durable & Anti Graffiti Frame Color Options

| | | | | | |
|---|---|---|---|--|---|
|  |  |  |  |  |  |
| 510 BLACK | 515 REGAL BLUE | 520 BRONZE | 525 BROWN | 530 CLAY | 535 IVORY |
|  |  |  |  | | |
| 540 TAN | 545 TERRA COTTA | 550 WHITE | 555 DARK GREEN | | |



PO Box 1290, Salem IL 62881
1-800-851-0865, Fax: 1-618-548-2890
Sales@Americana.com
www.Americana.com

